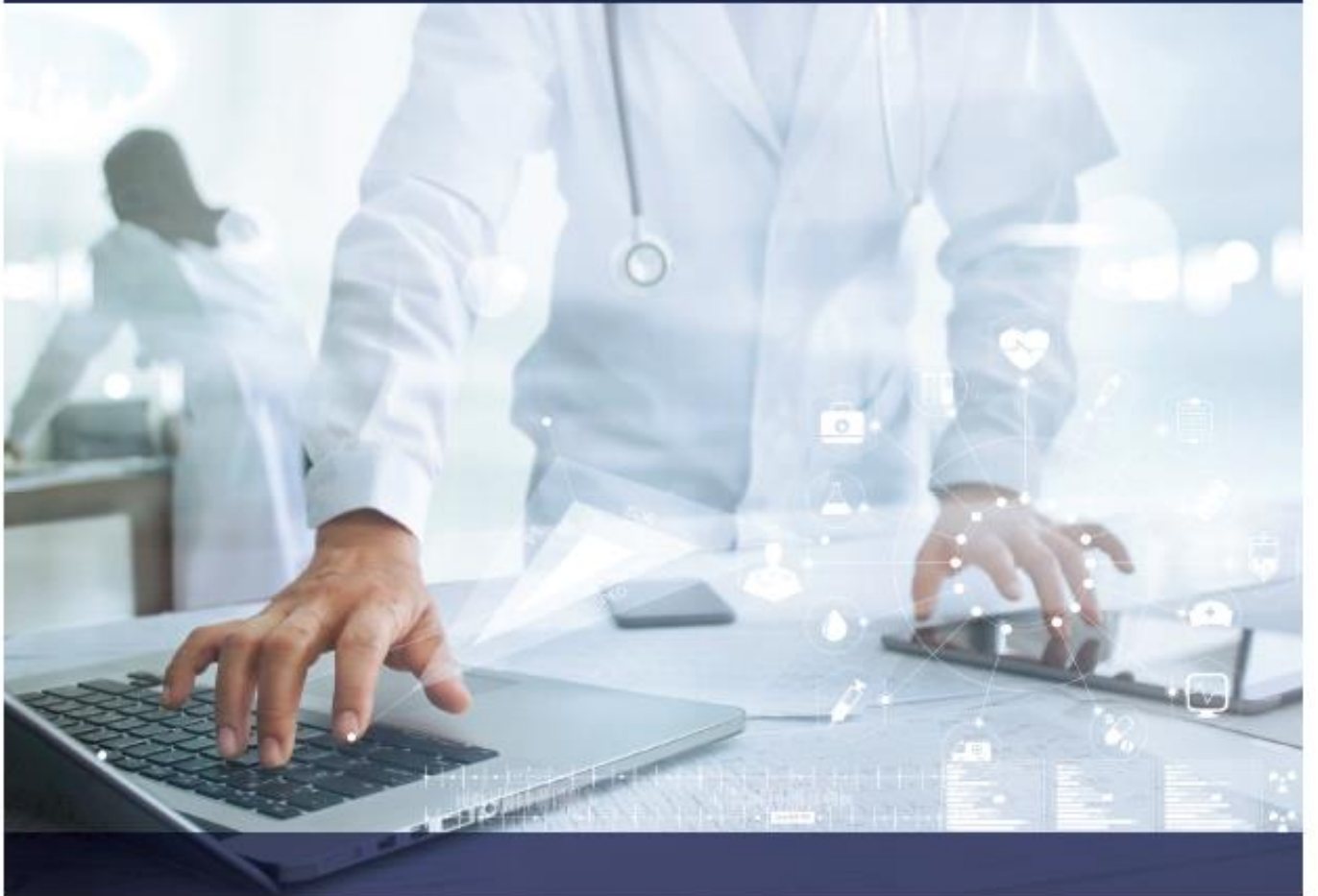




# CONTINUING MEDICAL EDUCATION

GUIDE FOR OSTEOPATHIC PHYSICIANS

## 2019 – 2021



1 American Osteopathic Association  
2 142 East Ontario Street  
3 Chicago, IL 60611  
4

5 **CME Guide for Osteopathic Physicians – ~~2016-2018~~2019-2021**  
6

7  
8 **Table of Contents**  
9

10 **Introduction** ..... 3  
11 **CME Requirements**..... 4  
12 **CME Requirements by Specialty Certifying Board per 3-Year AOA CME Cycle**.....4-7  
13 **Types of CME Credit** .....7-22  
14     AOA Category 1-A Credit ..... 8-11  
15     AOA Category 1-B Credit..... 13-17  
16     AOA Category 2-A Credit ..... 20-21  
17     AOA Category 2-B Credit..... 21-22  
18 **Non-Qualifying Activities**.....24-25  
19 **Reporting CME Activities**.....26-27  
20 **Other Questions** ..... 27  
21 **Appendices**.....28-34  
22     Appendix A: Proration Chart..... 28  
23     Appendix B: Exemptions, Reductions, and Waivers ..... 29-30  
24     Appendix C: Alphabetical List of CME Activities..... 31-34  
25     APPENDIX D: CRITERIA FOR CATEGORY 1-A AND 2-A PRESENTERS ..... 34  
26  
27

1 ~~Statement of Purpose~~

2 -  
3 ~~The purpose of the Continuing Medical Education Program (CME) of the American Osteopathic Association (AOA) is to~~  
4 ~~maintain and increase the medical knowledge and skills of the osteopathic physician. The ultimate goals of continuing~~  
5 ~~medical education are continued excellence of patient care and improving the health and well-being of the individual patient~~  
6 ~~and the public.~~

7 -  
8 ~~The American Osteopathic Association's mandatory program of continuing medical education is designed to encourage and~~  
9 ~~assist osteopathic physicians in achieving these objectives and goals.~~

10 -  
11 ~~The AOA's CME program is implemented by granting credits to osteopathic physicians for participation in approved CME~~  
12 ~~activities sponsored by recognized organizations, institutions and agencies. Specifically excluded from granting credit are~~  
13 ~~educational programs that lead to formal advanced degrees within the profession; these include pre-doctoral courses in~~  
14 ~~colleges of osteopathic medicine, internships, residencies and fellowships.~~

15 -  
16 ~~Accredited educational activities may be formal or informal, full time or part time activities, which may include, but are not~~  
17 ~~limited to, scientific seminars, workshops, refresher and postgraduate courses, lectures, home study, and local, state, regional~~  
18 ~~and national medical meetings. The American Osteopathic Association grants CME credits to osteopathic physicians for~~  
19 ~~their participation in educational activities that meet specific criteria.~~

20 -  
21 ~~For a more detailed description of the various types of osteopathic CME credits, and the criteria allocated to each type of~~  
22 ~~credit, please refer to this "AOA CME Guide for Osteopathic Physicians."~~

23 EFFECTIVE JANUARY 1, 2013, ALL AMERICAN OSTEOPATHIC ASSOCIATION (AOA) SPECIALTY  
24 CERTIFYING BOARDS IMPLEMENTED A CONTINUOUS CERTIFICATION PROCESS FOR OSTEOPATHIC  
25 PHYSICIANS, CALLED "OSTEOPATHIC CONTINUOUS CERTIFICATION (OCC)". THIS "AOA CME GUIDE  
26 FOR OSTEOPATHIC PHYSICIANS" IS INTENDED TO OUTLINE THE REQUIREMENTS FOR OCC  
27 COMPONENT 2: LIFELONG LEARNING/CONTINUING MEDICAL EDUCATION (CME), AND THE  
28 ACTIVITIES THAT MAY SERVE TO MEET THOSE REQUIREMENTS. THESE REQUIREMENTS ARE  
29 REQUIRED OF ALL PHYSICIANS WHO HOLD OSTEOPATHIC BOARD CERTIFICATION THROUGH THE  
30 AOA AND ITS 18 SPECIALTY CERTIFYING BOARDS (ALSO KNOWN AS DIPLOMATES).

31  
32 **CME Requirements**

33  
34 **TIME-LIMITED DIPLOMATES**

35 All TIME-LIMITED DIPLOMATES CERTIFIED BY ~~members of~~ the American Osteopathic Association (AOA) are  
36 required to participate in the Continuing Medical Education (CME) program and to meet specified CME credit hour  
37 requirements for the 2016-2018/2019-2021 CME cycle AS PART OF OSTEOPATHIC CONTINUOUS  
38 CERTIFICATION (OCC) COMPONENT 2, ~~unless exempted from this process by disability or membership status.~~

39  
40 ~~One hundred and twenty (120) CME credits are required for membership in the American Osteopathic Association within~~  
41 ~~this three-year cycle, beginning January 1, 2016 and ending December 31, 2018. Of this total, thirty (30) CME credits must~~  
42 ~~be obtained in Category 1-A and the remaining ninety (90) CME credit may be obtained with either Category 1-A, 1-B, 2-A,~~  
43 ~~or 2-B credits.~~ THE NUMBER OF CME CREDITS REQUIRED IS SET BY EACH SPECIALTY CERTIFYING  
44 BOARD. Physicians entering the program in mid-cycle will have their credit requirements prorated (AS OUTLINED IN  
45 APPENDIX A). A physician's CME Activity Report will outline his or her total CME requirement and the amount of  
46 credits required in Categories 1 and 2. THE CHART BELOW LISTS THE REQUIREMENTS BY SPECIALTY BOARD.  
47 DIPLOMATES WHO HOLD TIME-LIMITED CERTIFICATIONS MUST COMPLETE THE LIFELONG  
48 LEARNING/CME REQUIREMENT AS OUTLINED BELOW IN ADDITION TO THE OTHER COMPONENTS

1 OF OCC.

2  
3 **NON-TIME-LIMITED DIPLOMATES**

4 TRADITIONALLY THE AOA HAS REQUIRED 120 TOTAL CME (150 FOR EMERGENCY MEDICINE, FAMILY  
5 PRACTICE, AND NEUROMUSCULOLOGICAL MEDICINE) FOR NON-TIME-LIMITED PHYSICIANS. FOR  
6 THE 2019-2021 CME CYCLE, ALL NON-TIME-LIMITED DIPLOMATES WILL BE REQUIRED TO COMPLETE  
7 120 TOTAL CME REGARDLESS OF SPECIALTY.

8  
9 FOR THOSE NON-TIME-LIMITED DIPLOMATES WHO CHOOSE TO VOLUNTARILY PARTICIPATE IN OCC,  
10 DUE TO THE INCREASED PHYSICIAN ENGAGEMENT OF CONTINUOUS CERTIFICATION, THE  
11 REDUCED REQUIREMENTS OUTLINED BELOW WILL APPLY.

12  
13 **SPECIALTY-SPECIFIC CME**

14 IN THE PAST, AOA SPECIALTY CERTIFYING BOARDS HAVE REQUIRED SPECIALTY-SPECIFIC CME. AOA  
15 SPECIALTY CERTIFYING BOARDS WILL NOT REQUIRE DIPLOMATES TO OBTAIN SPECIALTY-SPECIFIC  
16 CME DURING THE 2019-2021 CME CYCLE. ALL FACULTY OF CATEGORY 1-A AND 2-A CME MUST BE  
17 BOARD CERTIFIED BY AN AOA OR AMERICAN BOARD OF MEDICAL SPECIALTIES (ABMS) BOARD OR  
18 FIT ONE TO THE CRITERIA LISTED IN APPENDIX D TO QUALIFY AS CATEGORY 1-A OR 2-A.

19  
20 **CME REQUIREMENTS BY SPECIALTY CERTIFYING BOARD PER 3-YEAR AOA**  
21 **CYCLE:**  
22

<b><u>SPECIALTY:</u></b>	<b><u>TOTAL REQUIREMENT:</u></b>	<b><u>CATEGORY 1-A AND/OR 1-B REQUIREMENT:</u></b>	<b><u>CATEGORY 2-A AND/OR 2-B (AMA PRA™) REQUIREMENT:</u></b>	<b><u>SPECIAL NOTES:</u></b>
ANESTHESIOLOGY (AOBA)	75 CREDITS OF CME	18 CREDITS (25%) MUST BE AOA CATEGORY 1-A CME	<i>NO SPECIFIC REQUIREMENT</i>	
DERMATOLOGY (AOBD)	60 CREDITS OF CME	15 CREDITS MUST BE AOA CATEGORY 1-A CME	<i>NO SPECIFIC REQUIREMENT</i>	A MAXIMUM OF 8 CME CREDITS WILL BE GRANTED FOR SERVING AS A PRECEPTOR
EMERGENCY MEDICINE (AOBEM)	150 CREDITS OF CME	<i>NO SPECIFIC REQUIREMENT</i>	<i>NO SPECIFIC REQUIREMENT</i>	
FAMILY PRACTICE (AOBFP)	150 CREDITS OF CME	75 CREDITS MUST BE AOA CATEGORY 1 CME. OF THAT, 25 HOURS MUST BE AOA CATEGORY 1-A CME.	MAXIMUM 75 CREDITS CAN COUNT TOWARDS THE TOTAL.	

<b><u>SPECIALTY:</u></b>	<b><u>TOTAL REQUIREMENT:</u></b>	<b><u>CATEGORY 1-A AND/OR 1-B REQUIREMENT:</u></b>	<b><u>CATEGORY 2-A AND/OR 2-B (AMA PRA™) REQUIREMENT:</u></b>	<b><u>SPECIAL NOTES:</u></b>
INTERNAL MEDICINE (AOBIM)	60 CREDITS OF CME	<i>NO SPECIFIC REQUIREMENT</i>	<i>NO SPECIFIC REQUIREMENT</i>	
NEUROMUSCULOSKELETAL MEDICINE (AOBNMM)	60 CREDITS OF CME	MUST INCLUDE 30 CREDITS OF AOA CATEGORY 1-A CME	<i>NO SPECIFIC REQUIREMENT</i>	
NEUROLOGY & PSYCHIATRY (AOBNP)	75 CREDITS OF CME	15 CREDITS MUST BE AOA CATEGORY 1-A CME	<i>NO SPECIFIC REQUIREMENT</i>	18 OF THE REQUIRED 75 CME WILL BE WAIVED IF A PHYSICIAN ATTENDS AN AMERICAN COLLEGE OF OSTEOPATHIC NEUROLOGISTS AND PSYCHIATRISTS (ACONP) ANNUAL OR MID-YEAR CONFERENCE
NUCLEAR MEDICINE (AOBNM)	60 CREDITS OF CME	<i>NO SPECIFIC REQUIREMENT</i>	<i>NO SPECIFIC REQUIREMENT</i>	
OBSTETRICS & GYNECOLOGY (AOBOG)	60 CREDITS OF CME	<i>NO SPECIFIC REQUIREMENT</i>	<i>NO SPECIFIC REQUIREMENT</i>	
OPHTHALMOLOGY & OTOLARYNGOLOGY (AOBOO)	60 CREDITS OF CME	<i>NO SPECIFIC REQUIREMENT</i>	<i>NO SPECIFIC REQUIREMENT</i>	
ORTHOPEDIC SURGERY (AOBOS)	60 CREDITS OF CME	<i>NO SPECIFIC REQUIREMENT</i>	<i>NO SPECIFIC REQUIREMENT</i>	

<b><u>SPECIALTY:</u></b>	<b><u>TOTAL REQUIREMENT:</u></b>	<b><u>CATEGORY 1-A AND/OR 1-B REQUIREMENT:</u></b>	<b><u>CATEGORY 2-A AND/OR 2-B (AMA PRA™) REQUIREMENT:</u></b>	<b><u>SPECIAL NOTES:</u></b>
PATHOLOGY (AOBPA)	60 CREDITS OF CME	<i>NO SPECIFIC REQUIREMENT</i>	<i>NO SPECIFIC REQUIREMENT</i>	IF A DIPLOMATE HOLDS CERTIFICATION IN BOTH ANATOMIC PATHOLOGY <u>AND</u> LABORATORY MEDICINE, THE TOTAL REQUIREMENT IS STILL 60 CREDITS
PEDIATRICS (AOBP)	60 CREDITS OF CME	15 CREDITS MUST BE AOA CATEGORY 1-A CME	<i>NO SPECIFIC REQUIREMENT</i>	
PHYSICAL MEDICINE & REHABILITATION (AOBPMR)	60 CREDITS OF CME	<i>NO SPECIFIC REQUIREMENT</i>	<i>NO SPECIFIC REQUIREMENT</i>	
PREVENTIVE MEDICINE (AOBPM)	60 CREDITS OF CME	<i>NO SPECIFIC REQUIREMENT</i>	<i>NO SPECIFIC REQUIREMENT</i>	
PREVENTIVE MEDICINE (AOBPM)	60 CREDITS OF CME	<i>NO SPECIFIC REQUIREMENT</i>	<i>NO SPECIFIC REQUIREMENT</i>	
PROCTOLOGY (AOBPR)	120 CREDITS OF CME	<i>NO SPECIFIC REQUIREMENT</i>	<i>NO SPECIFIC REQUIREMENT</i>	
RADIOLOGY (AOBR)	60 CREDITS OF CME	10 CREDITS MUST BE AOA CATEGORY 1-A CME	<i>NO SPECIFIC REQUIREMENT</i>	
SURGERY (AOBS)	60 CREDITS OF CME	<i>NO SPECIFIC REQUIREMENT</i>	<i>NO SPECIFIC REQUIREMENT</i>	

<u>SPECIALTY:</u>	<u>TOTAL REQUIREMENT:</u>	<u>CATEGORY 1-A AND/OR 1-B REQUIREMENT:</u>	<u>CATEGORY 2-A AND/OR 2-B (AMA PRA™) REQUIREMENT:</u>	<u>SPECIAL NOTES:</u>
CONJOINT CERTIFICATIONS: ADDICTION MEDICINE ALLERGY & IMMUNOLOGY CORRECTIONAL MEDICINE DERMATOPATHOLOGY HOSPICE & PALLIATIVE MEDICINE PAIN MEDICINE SLEEP MEDICINE SPORTS MEDICINE UNDERSEA & HYPERBARIC MEDICINE				CONJOINT CERTIFICATIONS ARE SUBSPECIALTY CERTIFICATIONS. AS SUCH ALL CONJOINT CERTIFICATE HOLDERS MUST ABIDE BY THE REQUIREMENT OF THEIR PRIMARY CERTIFICATION BOARD. THERE IS NO ADDITIONAL CME REQUIRED TO MAINTAIN A CONJOINT CERTIFICATION.

Members who obtain one hundred and fifty (150) credits or more of AOA approved applicable CME credit in a three-year CME cycle will be given a certificate of excellence in CME. These hours must be earned by December 31<sup>st</sup>, but reported no later than May 31<sup>st</sup> following the close of the current CME cycle.

AOA recognizes that members holding specialty or subspecialty certificates in specialties with less than three hundred (300) certificate holders may have difficulty accruing the required number of AOA 1-A credits for maintenance of membership. In such cases, members may apply AMA PRA Category 1 Credit™ or AAFP category 1 credits to their AOA 1-A credit requirement up to the maximum of 15 CME credits per cycle to meet the Category 1-A credit requirement for membership. To qualify for AOA Category 1-A CME credit under this policy the following criteria must be met:

1. Osteopathic physicians must be a member of the AOA
2. Physicians' must be AOA and/or ABMS certified
3. The specialty/subspecialty must be listed as a qualifying specialty

A list of specialties and subspecialties with less than 300 certified members is available at [www.osteopathic.org](http://www.osteopathic.org).

To request eligibility in this program, physicians should contact their certifying board. Specialty colleges may petition the Council on Continuing Medical Education (CCME) to have members exempted from the current policy if that specialty college feels that sufficient CME is available in the specialty or subspecialty listed for exemption. To do this, specialty affiliates must submit a detailed list of courses which provide CME that meets the needs of the specialty or subspecialty physicians.

Note: This exemption only applies to the thirty (30) Categories 1-A CME credits required for membership in the AOA.

The acceptance of ACCME accredited provider for AMA PRA Category 1 Credit™, AAFP, or credits from any other certifying body by the CCME in order fulfill AOA CME requirement does not convert said credits to AOA credits.

## Types of CME Credit

The AOA assigns CME credit to four categories: 1-A, 1-B, 2-A, and 2-B. IN VERY GENERAL TERMS, CATEGORY 1

1 IS TYPICALLY OSTEOPATHIC CME; AND CATEGORY 2 DENOTES ALLOPATHIC CME. AND CATEGORY A  
 2 IS USUALLY LIVE ACTIVITIES, AND CATEGORY B IS NOT (WITH A FEW EXCEPTIONS).  
 3

**AOA CATEGORY 1-A CREDIT**

<u>ACTIVITY TYPE</u>	<u>DESCRIPTION</u>	<u>RULES, CAPS, ETC.</u>
FORMAL OSTEOPATHIC CME	FORMAL FACE-TO-FACE PROGRAMS OR INTERACTIVE ONLINE PROGRAMS SPONSORED BY AOA-ACCREDITED CATEGORY 1 CME SPONSORS	GRANTED ON AN HOUR-FOR-HOUR BASIS
OSTEOPATHIC MEDICAL TEACHING	<p>PARTICIPATION AS LECTURERS IN OSTEOPATHIC MEDICAL EDUCATION IN A DIDACTIC FORMAT.</p> <p>FORMAL DELIVERY OF OSTEOPATHIC MEDICAL EDUCATION LECTURES IN THE FOLLOWING SETTINGS:</p> <ul style="list-style-type: none"> <li>• IN COLLEGES OF OSTEOPATHIC MEDICINE</li> <li>• AT SPECIALTY OR DIVISIONAL SOCIETY CONFERENCES</li> <li>• TO STUDENTS, INTERNS, RESIDENTS, FELLOWS, AND STAFF OF AOA-ACCREDITED CATEGORY 1 CME SPONSORS</li> <li>• VIA ONLINE COURSES OR WEBINARS</li> </ul>	<p>GRANTED ON AN HOUR-FOR-HOUR BASIS</p> <p>MUST BE VERIFIED BY THE CME DEPARTMENT OF AN AOA-ACCREDITED CATEGORY 1 CME COLLEGE OF OSTEOPATHIC MEDICINE, CATEGORY 1 CME SPONSORING HOSPITAL, OR OTHER CATEGORY 1 CME SPONSOR. IF THE SPONSOR DOES NOT SUBMIT THE CME ON YOUR BEHALF, PLEASE SUBMIT A LETTER FROM THE INSTITUTION STATING THE NUMBER OF HOURS AND DATE(S) TO RECEIVE CREDIT.</p> <p>CME CREDITS WILL NOT BE AWARDED FOR PREPARATION OF LECTURES.</p> <p>MEDICAL TEACHING AT A NON-OSTEOPATHIC INSTITUTION OR NON-AOA CATEGORY 1 SPONSOR WILL COUNT AS CATEGORY 2-A CME CREDIT.</p>



**AOA CATEGORY 1-A CREDIT (CONTINUED)**

<u>ACTIVITY TYPE</u>	<u>DESCRIPTION</u>	<u>RULES, CAPS, ETC.</u>
INTERACTIVE CME ON THE INTERNET	SYNCHRONOUS OR ASYNCHRONOUS DELIVERY OF INTERACTIVE INTERNET CME PROVIDED BY AN AOA-ACCREDITED CATEGORY 1 CME SPONSOR	IF DELIVERY OF CONTENT IS ASYNCHRONOUS, TO QUALIFY FOR CATEGORY 1-A CREDIT, INSTRUCTOR RESPONSES TO PARTICIPANT QUESTIONS MUST BE RECEIVED WITHIN 48 HOURS. SYNCHRONOUS OR ASYNCHRONOUS, INTERACTIVE INTERNET CME FROM <i>AMA PRA CATEGORY 1™</i> OR AAFP-ACCREDITED SPONSORS OR WILL COUNT AS CATEGORY 2-A.
STANDARDIZED LIFE SUPPORT COURSES	STANDARDIZED LIFE SUPPORT COURSES INCLUDING PROVIDER, REFRESHER, AND INSTRUCTOR LEVELS. INCLUDES THE FOLLOWING TYPES OF COURSES: <ul style="list-style-type: none"> <li>• ADVANCED TRAUMA LIFE SUPPORT</li> <li>• ADVANCED CARDIAC LIFE SUPPORT</li> <li>• BASIC LIFE SUPPORT</li> <li>• PEDIATRIC ADVANCED LIFE SUPPORT (AHA) OR ADVANCED PEDIATRIC LIFE SUPPORT (AAP)</li> <li>• NEONATAL ADVANCED LIFE SUPPORT</li> <li>• ADVANCED LIFE SUPPORT IN OBSTETRICS</li> <li>• ADULT FUNDAMENTALS OF CRITICAL CARE SUPPORT</li> <li>• PEDIATRIC FUNDAMENTALS OF CRITICAL CARE LIFE SUPPORT</li> <li>• ADVANCED HAZMAT LIFE SUPPORT</li> <li>• ADVANCED BURN LIFE SUPPORT</li> <li>• BASIC DISASTER LIFE SUPPORT</li> <li>• ADVANCED DISASTER LIFE SUPPORT</li> </ul>	ONLINE STANDARDIZED COURSES WILL BE AWARDED CME CREDIT FOR THE PRACTICAL PART ONLY.

## AOA CATEGORY 1-A CREDIT (CONTINUED)

ACTIVITY TYPE	DESCRIPTION	RULES, CAPS, ETC.
GRAND ROUNDS	MUST BE CONDUCTED BY AN AOA-ACCREDITED CATEGORY 1 CME SPONSOR TO RECEIVE CATEGORY 1-A CME CREDIT.	GRANTED ON AN HOUR-FOR-HOUR BASIS  ALL NON-OSTEOPATHIC GRAND ROUNDS WILL RECEIVE CATEGORY 1-B CME CREDIT.
ORAL/PRACTICAL EXAMINATIONS FOR AOA CERTIFYING BOARDS	ADMINISTRATION OF AN ORAL AND/OR PRACTICAL EXAMINATION FOR AN AOA SPECIALTY CERTIFYING BOARD	GRANTED ON AN HOUR-FOR-HOUR BASIS
STANDARDIZED FEDERAL AVIATION COURSES	<p>THE FOLLOWING COURSES CAN COUNT FOR CREDIT:</p> <ul style="list-style-type: none"> <li>• AVIATION MEDICINE</li> <li>• FLIGHT SURGEON PRIMARY COURSE</li> <li>• CARDIOLOGY-THEMED SEMINARS</li> <li>• NEUROLOGICAL-THEMED SEMINARS</li> <li>• BASIC STANDARDIZED SEMINARS</li> <li>• ALL FEDERALLY-MANDATED MEDICAL COURSES</li> <li>• ALL STANDARDIZED CME COURSES OFFERED FOR THE PURPOSE OF MAINTAINING AN AEROMEDICAL EXAMINER DESIGNATION</li> </ul>	GRANTED ON AN HOUR-FOR-HOUR BASIS  MUST BE SPONSORED BY THE FEDERAL AVIATION ADMINISTRATION, THE UNITED STATES ARMED SERVICES, OR THE CIVIL AERONAUTIC INSTITUTE
FEDERAL ACTIVITIES (ACTIVE DUTY/ UNIFORMED SERVICE)	FORMAL CME PROGRAMS TO PARTICIPANTS WHO ARE ON ACTIVE DUTY OR EMPLOYED BY A UNIFORMED SERVICE.	GRANTED ON AN HOUR-FOR-HOUR BASIS  ALL OTHER FEDERAL CME ACTIVITIES WILL RECEIVE CATEGORY 1-B CME CREDIT.
JUDGING OSTEOPATHIC CLINICAL CASE PRESENTATIONS AND RESEARCH POSTER PRESENTATIONS	SERVING AS A FORMAL JUDGE FOR OSTEOPATHIC CLINICAL CASE PRESENTATIONS AND RESEARCH POSTER PRESENTATIONS AT A FORMAL CME FUNCTION IMPLEMENTED BY AN AOA-ACCREDITED SPONSOR	GRANTED ON AN HOUR-FOR-HOUR BASIS  MAXIMUM OF TEN (10) CME CREDITS PER 3-YEAR AOA CME CYCLE

## AOA CATEGORY 1-A CREDIT (CONTINUED)

ACTIVITY TYPE	DESCRIPTION	RULES, CAPS, ETC.
CLINICAL CASE PRESENTATIONS AND RESEARCH POSTER PRESENTATION	PRIMARY AUTHOR IN PREPARING AND PRESENTING A CLINICAL CASE OR RESEARCH POSTER PRESENTATION IMPLEMENTED BY AN AOA-ACCREDITED SPONSOR	MUST BE PRIMARY AUTHOR  WILL RECEIVE 5 CME PER PRESENTATION

### ~~I. Category 1-A Credit~~

~~AOA Category 1-A credits will be granted to attendees for formal educational programs designed to enhance clinical competence and improve patient care. These programs must be sponsored by an AOA accredited Category 1 CME sponsor and are limited to:~~

#### ~~A. Formal Osteopathic CME~~

~~Consisting of formal face-to-face programs or interactive online (See Section VI. that meet the Category 1 quality guidelines, faculty requirements, and which are sponsored by AOA accredited Category 1 CME sponsors.~~

~~Topics must be related to any of the seven (7) Core Competencies listed below, as the core competencies have been recognized throughout the continuum of osteopathic education as essential and critical to the development and maintenance of osteopathic physicians' overall education.~~

#### ~~Seven (7) Core Competencies:~~

~~1. Osteopathic Philosophy/Osteopathic Manipulative Medicine: Demonstration and application of knowledge of accepted standards in osteopathic manipulative treatment appropriate to the specialty; dedication to life-long learning and to incorporating the practice of osteopathic philosophy and OMM in patient care.~~

~~2. Medical Knowledge — Demonstration and application of knowledge of accepted standards of clinical medicine in the respective area; remain current with new developments in medicine and participate in life-long learning.~~

~~3. Patient Care — Demonstrate the ability to effectively treat patients and provide medical care that incorporates the osteopathic philosophy, patient empathy, awareness of behavioral issues, the incorporation of preventive medicine and health promotion.~~

~~4. Interpersonal and Communication Skills — Demonstrate interpersonal and communication skills that enable a physician to establish and maintain professional relationships with patients, families, and other members of health care teams.~~

~~5. Professionalism — Uphold the Osteopathic Oath in the conduct of one's professional activities that promotes advocacy of patient welfare, adherence to ethical principles, and collaboration with health professionals, life-long learning, and sensitivity to a diverse patient population; be cognizant of physical and mental health in order to effectively care for patients.~~

~~6. Practice-Based Learning and Improvement — Demonstrate the ability to critically evaluate methods of clinical practice, integrate evidence based medicine into patient care; show an understanding of research methods; improve patient care practices. 7. Systems-Based Practice — Demonstrate an understanding of health care delivery systems; provide effective and qualitative patient care within the system; and practice cost effective medicine.~~

#### ~~B. Osteopathic Medical Teaching~~

~~Physicians who participate as lecturers in osteopathic medical education in a didactic format are eligible to receive Category~~

~~1 A credit for their participation. Credit is granted on an hour for hour basis. Methods of this education are limited to:~~

~~2 -~~  
~~3 1. Formal delivery of osteopathic medical education lectures in colleges of osteopathic medicine, speaking at specialty and~~  
~~4 divisional society conferences.—~~

~~5~~  
~~6 2. Formal delivery of osteopathic medical education to students, interns, residents, fellows, and staff of AOA-accredited~~  
~~7 Category 1 CME Sponsors.—~~

~~8 -~~  
~~9~~  
~~10 3. Teaching credit must be verified by the CME Department of an AOA-accredited Category 1 CME college of osteopathic~~  
~~11 medicine or Category 1 CME sponsoring hospital.—~~

~~12~~  
~~13 CME credits will not be awarded for preparation of lectures.—~~

~~14 -~~  
~~15 **C. Standardized Federal Aviation Courses**~~

~~16 The following standardized CME programs sponsored by the Federal Aviation Administration or United States Armed~~  
~~17 Services are eligible for Category 1-A credit.—~~

- ~~18 1. Aviation Medicine—~~
- ~~19 2. Flight Surgeon Primary Course—~~
- ~~20 3. Cardiology Themed Seminars—~~
- ~~21 4. Neurological Themed Seminars—~~
- ~~22 5. Basic Standardized Seminars—~~

~~23 In addition, all standardized CME courses offered by the Civil Aeronautic Institute or Federal Aviation Administration for~~  
~~24 the purpose of maintaining an aeromedical examiner designation are eligible for Category 1-A.—~~

~~25 -~~  
~~26 **D. Federal Programs**~~

~~27 AOA Category 1-A credit will be awarded for formal CME programs to participants who are on active duty or employed by~~  
~~28 a uniformed service. Category 1-B will be awarded to all other federal CME activities.—~~

~~29 -~~  
~~30 **E. Grand Rounds**~~

~~31 Grand rounds will be considered for AOA Category 1-A credit. To obtain this credit, grand rounds programs must be~~  
~~32 submitted in series of three and must meet the requirements for Category 1-A credit.—~~

~~33 -~~  
~~34 **F. Judging Osteopathic Clinical Case Presentations and Research Poster Presentations**~~

~~35 Osteopathic physicians serving as formal judges for osteopathic clinical case presentations and research poster presentations~~  
~~36 at a formal CME function will be awarded AOA Category 1-A credits. This credit is granted on an hour for hour basis. The~~  
~~37 physician may earn up to a maximum of ten (10) credits per AOA 3-year CME cycle.—~~

### AOA CATEGORY 1-B CREDIT

ACTIVITY TYPE	DESCRIPTION	RULES, CAPS, ETC.
GME FACULTY/PRECEPTORS	SERVING AS GME FACULTY, GME CORE FACULTY, OR PRECEPTORS IN ANY AOA-APPROVED OSTEOPATHIC OR ACGME-ACCREDITED GRADUATE MEDICAL EDUCATION	<p>GRANTED ON AN HOUR-FOR-HOUR BASIS</p> <p>A MAXIMUM OF 20% OF THE REQUIRED CME CREDITS PER 3-YEAR AOA CME CYCLE MAY BE EARNED FOR THIS ACTIVITY.</p> <p>NO CREDIT IS AVAILABLE FOR PRECEPTORING PHYSICIAN ASSISTANTS OR NURSE PRACTITIONERS.</p> <p>IF CME FOR GME FACULTY/PRECEPTORING IS NOT REPORTED DIRECTLY BY THE SPONSOR, PLEASE SUBMIT A LETTER FROM THE INSTITUTION STATING THE NUMBER OF HOURS AND DATE(S) TO RECEIVE CREDIT.</p>
NON-INTERACTIVE CME ON THE INTERNET	<p>INCLUDES AUDIO AND VIDEO PROGRAMS ON THE INTERNET SPONSORED BY AOA-ACCREDITED CATEGORY 1 CME SPONSORS.</p> <p>THESE COURSES ARE TYPICALLY PROGRAMS THAT ARE AVAILABLE ON AN ON DEMAND SCHEDULE AND ARE NOT A REAL-TIME, INTERACTIVE SIMULTANEOUS CONFERENCE.</p>	<p>CATEGORY 2-B CREDIT WILL ALSO BE AWARDED TO JOURNAL-TYPE CME ON THE INTERNET THAT IS PRODUCED BY AN AOA-ACCREDITED SPONSOR, ACCME ACCREDITED PROVIDER FOR <i>AMA PRA CATEGORY 1™</i>, OR APPROVED BY THE AAFP. THESE COURSES ARE ESSENTIALLY STATIC, TEXTBOOK TYPE PROGRAMS. THEY MAY HAVE HYPERTEXT JUMPS TO HELP THE READER PURSUE SPECIFIC INFORMATION.</p>

**AOA CATEGORY 1-B CREDIT (CONTINUED)**

ACTIVITY TYPE	DESCRIPTION	RULES, CAPS, ETC.
<p>JOURNAL READING (<i>JAOA</i> AND OTHER OSTEOPATHIC JOURNALS)</p>	<p>READING AN ISSUE OF THE <i>JOURNAL OF THE AMERICAN OSTEOPATHIC ASSOCIATION (JAOA)</i> AND PASSING THE RESPECTIVE CME QUIZ WITH A MINIMUM GRADE OF 70%</p>	<p>TWO (2) CME CREDITS WILL BE AWARDED FOR EACH ISSUE OF THE <i>JAOA</i></p> <p>NON-MEMBERS WHO SUBMIT HARD COPIES OF COMPLETED QUIZZES WILL BE CHARGED A FEE PER <i>JAOA</i> QUIZ FOR STAFF TIME TO GRADE, RECORD, AND PROVIDE A LETTER AS DOCUMENTATION OF APPLICABLE CME. IN ADDITION, NON-MEMBERS HAVE THE CAPABILITY OF COMPLETING THE QUIZZES ONLINE AT <a href="http://AOAONLINELEARNING.OSTEOPATHIC.ORG">AOAONLINELEARNING.OSTEOPATHIC.ORG</a>.</p> <p>READING OF ALL OTHER OSTEOPATHIC MEDICAL JOURNALS INDEXED IN PUBMED QUALIFIES FOR AOA CATEGORY 1-B CREDIT, AND READING OF ALL OTHER MEDICAL JOURNALS INDEXED IN PUBMED QUALIFIES FOR AOA CATEGORY 2-B CREDIT AND IS AWARDED ONE-HALF (0.5) CME CREDIT FOR EACH JOURNAL READ AND REPORTED ON THE FORM.</p> <p>JOURNAL READING AND OTHER TYPES OF HOME STUDY CME INDEXED IN PUBMED HAVE A COMBINED MAXIMUM OF TWENTY (20) CME PER 3-YEAR AOA CME CYCLE.</p>
<p>GRAND ROUNDS (NON-OSTEOPATHIC)</p>	<p>GRAND ROUNDS THAT OCCUR AT AN ORGANIZATION THAT IS NOT AN AOA CATEGORY 1 CME SPONSOR</p>	<p>GRANTED ON AN HOUR-FOR-HOUR BASIS</p>
<p>PRIMARY CERTIFICATION EXAMINATION</p>	<p>PASSING ANY PRIMARY CERTIFICATION EXAMINATION</p>	<p>15 CATEGORY 1-B CME CREDITS FOR EACH EXAM PASSED</p>
<p>SUBSPECIALTY/CAQ CERTIFICATION EXAMINATION</p>	<p>PASSING A CERTIFICATION EXAMINATION IN ANY SUBSPECIALTY OR CERTIFICATE OF ADDED QUALIFICATIONS</p>	<p>15 CATEGORY 1-B CME CREDITS FOR EACH EXAM PASSED</p>

### AOA CATEGORY 1-B CREDIT (CONTINUED)

ACTIVITY TYPE	DESCRIPTION	RULES, CAPS, ETC.
OCC COMPONENT 3 EXAMINATION/PROCESS	PASSING AN OCC EXAMINATION OR COMPLETING THE OCC COMPONENT 3 PROCESS IN ANY SPECIALTY, SUBSPECIALTY, OR CERTIFICATE OF ADDED QUALIFICATIONS	15 CATEGORY 1-B CME CREDITS FOR COMPLETING COMPONENT 3 PER 3-YEAR AOA CME CYCLE.
RESIDENCY/FELLOWSHIP TRAINING	FORMAL TRAINING IN AN AOA-ACCREDITED OR ACGME-ACCREDITED RESIDENCY OR FELLOWSHIP PROGRAM	TWENTY (20) CREDITS OF CATEGORY 1-B CME MAY BE AWARDED PER YEAR
POSTGRADUATE STUDIES	OBTAINING AN ADVANCED DEGREES, SUCH AS MASTERS IN PUBLIC HEALTH, BUSINESS ADMINISTRATION OR DOCTORATE STUDIES OF ANY KIND	TWENTY FIVE (25) CREDITS OF CATEGORY 1-B CME MAY BE AWARDED
EXAM CONSTRUCTION – COMMITTEE WORK	MEETINGS OR SEMINARS OF AN AOA SPECIALTY CERTIFYING BOARD OR CONJOINT COMMITTEE; AN AOA PRACTICE AFFILIATE’S POSTGRADUATE IN-SERVICE EXAMINATION COMMITTEE, OR AT A MEETING OF THE NATIONAL BOARD OF OSTEOPATHIC MEDICAL EXAMINERS	PARTICIPATION IN EXAM DEVELOPMENT/CONSTRUCTION AND JOB TASK ANALYSES CAN EARN A MAXIMUM COMBINED 50% OF THE REQUIRED CME PER 3-YEAR AOA CME CYCLE
EXAM CONSTRUCTION – ITEM WRITING	WRITING EXAMINATION ITEMS ACCEPTED BY AN AOA SPECIALTY CERTIFYING BOARD OR CONJOINT COMMITTEE, AN AOA-ACCREDITED CATEGORY 1 PROVIDER, AND/OR THE NATIONAL BOARD OF OSTEOPATHIC MEDICAL EXAMINERS	
EXAM CONSTRUCTION – CLINICAL CASE DEVELOPMENT	WRITING CLINICAL CASES ACCEPTED BY AN AOA SPECIALTY CERTIFYING BOARD OR CONJOINT COMMITTEE; OR THE NATIONAL BOARD OF OSTEOPATHIC MEDICAL EXAMINERS	
JOB TASK ANALYSES (JTAS)	PARTICIPATION IN THE DEVELOPMENT OF A JOB TASK ANALYSIS FOR AN AOA SPECIALTY CERTIFYING BOARD	

	<p>OR CONJOINT COMMITTEE OR RESPONSE TO THE SURVEY GIVEN AS PART OF THE JTA PROCESS.</p> <p>JTAS ARE ESSENTIAL SELF-ASSESSMENT EXAMINATIONS CONDUCTED EVERY 5-7 YEARS AS THE BASIS FOR ALL BOARD CERTIFICATION EXAMINATIONS.</p>	
<b>AOA CATEGORY 1-B CREDIT (CONTINUED)</b>		
<u>ACTIVITY TYPE</u>	<u>DESCRIPTION</u>	<u>RULES, CAPS, ETC.</u>
PUBLICATIONS	DEVELOPMENT AND PUBLICATION OF SCIENTIFIC PAPERS AND ONLINE OSTEOPATHIC EDUCATIONAL PROGRAMS	10 CME CREDITS PER ARTICLE PUBLISHED
FEDERAL PROGRAMS ( <i>NOT</i> ACTIVE DUTY / UNIFORMED SERVICE)	ANY FORMAL CME PROGRAMS TO PARTICIPANTS WHO ARE <i>NOT</i> ON ACTIVE DUTY OR EMPLOYED BY A UNIFORMED SERVICE.	(ACTIVE DUTY OR UNIFORMED SERVICE EMPLOYMENT CONSTITUTES CATEGORY 1-A)
COMMITTEE AND HOSPITAL STAFF WORK	<p>PARTICIPATING IN PATIENT CARE IN NON-ADMINISTRATIVE HOSPITAL DEPARTMENT STAFF ACTIVITIES, INCLUDING CARE-BASED COMMITTEES, SUCH AS:</p> <ul style="list-style-type: none"> <li>• CRITICAL CARE COMMITTEE</li> <li>• UTILIZATION REVIEW</li> <li>• PHARMACY AND THERAPEUTICS</li> <li>• PATIENT SAFETY</li> <li>• TUMOR BOARD</li> <li>• MORBIDITY AND MORTALITY</li> <li>• ANY OTHER PATIENT-CARE ORIENTED COMMITTEE DESIGNED TO IMPROVE PATIENT CARE</li> </ul>	<p>TO OBTAIN CREDIT, PHYSICIANS MUST SUBMIT THE APPROPRIATE FORM.</p> <p>MAXIMUM OF FIVE (5) CME CAND BE EARNED PER 3-YEAR AOA CME CYCLE</p>



**AOA CATEGORY 1-B CREDIT (CONTINUED)**

ACTIVITY TYPE	DESCRIPTION	RULES, CAPS, ETC.
<p>NON-OSTEOPATHIC CME PROGRAMS (CONVERSION FROM CATEGORY 2-A TO CATEGORY 1-B)</p>	<p>NON-OSTEOPATHIC CME PROGRAMS CAN AUTOMATICALLY COUNT AS CATEGORY 2-A OR 2-B CREDIT.</p> <p>THE BOS MAY RECOGNIZE NON-OSTEOPATHIC SPECIALTY OR SUBSPECIALTY PROGRAMS THAT WOULD OTHERWISE QUALIFY AS CATEGORY 2-A CREDIT FOR CATEGORY 1-B CREDIT, WHEN THERE IS ESSENTIALLY NO EQUIVALENT COURSE CONTENT AVAILABLE WITHIN THE OSTEOPATHIC PROFESSION. CREDIT FOR SUCH PROGRAMS WILL BE APPLIED TO ALL PHYSICIANS IN THAT SPECIALTY OR SUBSPECIALTY WHO PARTICIPATE IN THE COURSE.</p> <p>THE COURSE MUST CONSIST OF AT LEAST THREE (3) CREDIT HOURS AND BE PROVIDED BY A PROVIDER ACCREDITED BY THE ACCME FOR <i>AMA PRA CATEGORY 1 CREDIT™</i> OR THE AAFP, OR AN INTERNATIONALLY KNOWN SPONSOR ACCEPTABLE TO THE BOS.</p>	<p>TO REQUEST CONSIDERATION FOR CATEGORY 1-B CREDIT, THE PHYSICIAN MUST WRITE TO THE BOS AT AOA HEADQUARTERS IN CHICAGO AND PROVIDE THE FOLLOWING:</p> <ol style="list-style-type: none"> <li>1) A COMPLETED <a href="#">NON-OSTEOPATHIC PROGRAM'S REQUESTS FOR CATEGORY 1-B CREDIT</a> FORM</li> <li>2) A COPY OF THE PRINTED PROGRAM (OR SYLLABUS) OUTLINING THE LECTURES BEING PRESENTED, LENGTH OF THE LECTURE AND THE FACULTY PRESENTING AT THE CONFERENCE</li> <li>3) AN OFFICIAL DOCUMENT VERIFYING THE PHYSICIAN'S ATTENDANCE</li> </ol> <p>THE APPLICANT SHOULD BE AWARE THAT THIS REQUEST WILL BE FORWARDED TO THE SPECIALTY AFFILIATE TO VERIFY THAT SIMILAR PROGRAMS AND/OR LECTURES HAVE NOT BEEN OR ARE NOT BEING OFFERED BY AN AOA-ACCREDITED CME PROVIDER.</p> <p>THE AOA PERFORMS REVIEWS OF NON-OSTEOPATHIC COURSES AS A MEMBER SERVICE. NON-MEMBERS MAY REQUEST AOA CATEGORY 1-B CREDIT FOR NON-OSTEOPATHIC SPONSORED CME PROGRAMS BY FOLLOWING THE SAME PROCEDURE OUTLINE, ALONG WITH PAYMENT OF A FEE FOR EACH PROGRAM SUBMITTED FOR REVIEW.</p>

~~H. Category 1-B Credit~~

~~A. Publications, Inspections, Examinations, and Committee Meetings~~

~~Physicians may receive credit for their participation in the following areas:~~

- ~~1. Development and publication of scientific papers and online osteopathic educational programs;~~
- ~~2. Acting in the role of a surveyor or consultant of (A) an osteopathic healthcare facility; (B) college accreditation; graduate medical education program or OPTI site visit.~~
- ~~3. Development of or proctoring a board certification examination.~~
- ~~4. Participation on an osteopathic state licensing professional review board; and for healthcare committee and departmental meetings which review and evaluate patient care whether the committee work is in an osteopathic or allopathic institution.~~

#### ~~B. GME Faculty/Preceptors~~

~~Osteopathic physicians serving as preceptors/GME faculty in any AOA approved osteopathic or ACGME accredited graduate medical education program may be granted Category 1-B credit.~~

~~A maximum of 60 AOA Category 1-B credits for faculty/preceptoring may be applied to the 120-hour requirement per CME cycle.~~

~~Osteopathic physicians who serve as core clinical faculty for graduate medical education programs, regardless of the institutional residency affiliation, may be granted Category 1-B credit.~~

~~To obtain credit for faculty and core faculty, the institution/hospital Program Director or Director of Medical Education (DME) must provide a signed evaluation of the physician's participation to the AOA Department of Client and Member Services verifying the physician's teaching activity.~~

~~No credit is available for preceptoring physician assistants or nurse practitioners.~~

#### ~~C. Certification Examination Credit~~

~~A maximum of fifteen (15) Category 1-B credits per CME cycle will be awarded to AOA members who pass an AOA recertification examination or obtain a certification of added qualification.~~

#### ~~D. Committee and Hospital Staff Work~~

~~Category 1-B will be granted to osteopathic physicians who educate and participate in patient care in non-administrative hospital department staff activities to include care-based committees such as critical care committee, utilization review, pharmacy and therapeutics, patient safety, tumor board, morbidity and mortality or any other patient care oriented committee designed to improve patient care. This credit will be granted regardless of the institution's educational affiliation.~~

~~To obtain credit the institution's medical staff office or CME director must document the physician's participation.~~

#### ~~E. Non-Osteopathic CME Programs~~

~~The Council on Continuing Medical Education may recognize non-osteopathic specialty or subspecialty programs for Category 1-B credit, when there is essentially no equivalent course content available within the osteopathic profession. Credit for such programs will be applied to all physicians in that specialty or subspecialty who participate in the course.~~

~~These courses must be provided by an Accreditation Council for Continuing Medical Education (ACCME) accredited provider for *AMA-PR4 Category 1 Credit*<sup>TM</sup> or the American Academy of Family Physicians (AAFP) credit, or provided by an internationally known sponsor acceptable to the CCME. An eligible program is defined as a course consisting of at least three (3) credits hours. Home study activities/courses do not qualify under this policy.~~

~~To request consideration of a non-osteopathic course for Category 1-B credit, the osteopathic physician must write to the AOA Department of Client and Member Services at AOA Headquarters in Chicago and provide the following:~~

- ~~(1) A completed Non-Osteopathic Program's Requests for Category 1-B credit form (<http://www.osteopathic.org/inside>~~

~~1 [aoa/development/continuing-medical-education/Documents/request-for-aoa-category-1-B-credit.pdf](#) (2) a copy of the  
2 printed program (or syllabus) outlining the lectures being presented, length of the lecture and the faculty presenting at the  
3 conference; (3) an official document verifying the physician's attendance.—~~

~~4 -  
5 -  
6 The applicant should be aware that this request will be forwarded to the specialty affiliate to verify that similar programs  
7 and/or lectures have not been or are not being offered by an AOA-accredited CME provider.—~~

~~8 -  
9 The AOA performs reviews of non-osteopathic courses as a member service. Non-members may request AOA Category 1-  
10 B credit for non-osteopathic sponsored CME programs by following the same procedure outline, along with payment of a  
11 \$25.00 application fee and a \$10.00 processing fee for each program submitted for review.—~~

#### ~~12 **F. Journal Reading**—~~

~~13 Osteopathic physicians can earn two credit hours of AOA Category 1-B credit for each issue of the *Journal of the American*  
14 *Osteopathic Association (JAOA)* read and passing of the respective CME quiz with a minimum grade of 70%.—~~

~~15 -  
16 Non-members who forward hard copies of completed quizzes to the AOA Department of Client and Member Services will  
17 be charged a fee of \$25 per *JAOA* quiz for staff time to grade, record and provide a letter to the DO as documentation of  
18 applicable CME. In addition, non-members have the capability of completing the quizzes online by visiting —  
19 Reading of all other medical journals qualifies for AOA Category 2-B credit and is awarded one-half (0.5) hour of CME  
20 credit for each journal read.—~~

#### ~~21 **G. Test Construction, Committee Work**—~~

##### ~~22 **1. Formal**—~~

~~23 a. Test construction committee work will be awarded Category 1-B credit for meetings or seminar; of an AOA certifying  
24 board; an AOA practice affiliate's postgraduate in-service examination committee, or at a meeting of the National Board of  
25 Osteopathic Medical Examiners. CME credit is granted on an hour-for-hour basis.—~~

~~26 -  
27 b. Ten (10) Category 1-B credits will be awarded for administering the oral practical examinations. These credits may be  
28 awarded for specialty continuing medical education (CME) up to the maximum of ten credits per CME cycle.—~~

##### ~~29 **2. Informal**—~~

~~30 a. One (1) Category 1-B credit will be awarded for each accepted test item written, up to a maximum of ten (10) credits per  
31 CME cycle, when submitted to an AOA official certifying board, AOA-accredited Category 1 provider, and/or The  
32 National Board of Osteopathic Medical Examiners.—~~

~~33 -  
34 b. Two (2) Category 1-B credits will be awarded, up to a maximum of twenty (20) credits per CME cycle, for accepted  
35 clinical cases developed and submitted to the National Board of Osteopathic Medical Examiners and osteopathic board  
36 certification examinations.—~~

~~37 -  
38 e. One-half (0.5) Category 1-B credit will be awarded for each Job Task Analysis (JTA) an osteopathic physician participates  
39 in, up to a maximum of five (5) credits per CME cycle. These credits may also be awarded for specialty continuing medical  
40 education (CME), up to the maximum of five credits per CME cycle.—~~

~~41 -  
42 Job Task Analyses (JTAs) are essential self-assessment examinations conducted every 5-7 years as the basis for all board  
43 certification examinations. JTAs require physicians to review a significant number of tasks that are done on a regular basis  
44 in their specialty. These tasks are ranked on how often they are done (frequency) and how essential the task is to patient care  
45 (importance).—~~

~~46 JTAs are used to develop the content outline (blueprint) for the certification examination by defining practice focus areas  
47 for testing an osteopathic physician's knowledge and expertise.—~~

1 Credit will not be awarded for meetings that are primarily administrative in nature.  
2

**AOA CATEGORY 2-A CREDIT**

ACTIVITY TYPE	DESCRIPTION	RULES, CAPS, ETC.
FORMAL EDUCATIONAL PROGRAMS (NON-OSTEOPATHIC)	FORMAL FACE-TO-FACE EDUCATIONAL PROGRAMS THAT ARE SPONSORED BY AN ACCME ACCREDITED PROVIDER FOR <i>AMA PRA CATEGORY 1 CREDIT™</i> ; APPROVED BY THE AMERICAN ACADEMY OF FAMILY PHYSICIANS (AAFP); APPROVED BY AN INTERNATIONALLY KNOWN SPONSOR ACCEPTABLE TO THE BOS, OR AN AOA-ACCREDITED CATEGORY 1 CME SPONSOR THAT DOES NOT MEET THE FACULTY/HOURS REQUIREMENT FOR CATEGORY 1-A CREDIT	GRANTED ON AN HOUR-FOR-HOUR BASIS
INTERACTIVE CME ON THE INTERNET	REAL TIME, INTERACTIVE INTERNET CME (LIVE ONLINE PROGRAMS) PROVIDED BY AN <i>AMA PRA CATEGORY 1™</i> OR AAFP-ACCREDITED SPONSOR	REAL TIME, INTERACTIVE INTERNET CME PROVIDED BY AOA CATEGORY 1-A ACCREDITED SPONSORS WILL COUNT AS CATEGORY 1-A.
MEDICAL TEACHING (NON-OSTEOPATHIC)	FORMAL DELIVERY OF MEDICAL EDUCATION LECTURES IN THE FOLLOWING SETTINGS: <ul style="list-style-type: none"> <li>• IN MEDICAL COLLEGES THAT ARE NOT COLLEGES OF OSTEOPATHIC MEDICINE</li> <li>• AT ALLOPATHIC SPECIALTY OR DIVISIONAL SOCIETY CONFERENCES</li> <li>• TO STUDENTS, INTERNS, RESIDENTS, FELLOWS, AND STAFF</li> </ul>	GRANTED ON AN HOUR-FOR-HOUR BASIS  MUST BE VERIFIED BY THE CME DEPARTMENT OF THE MEDICAL COLLEGE, SPONSORING HOSPITAL, OR SPONSOR. TO REPORT CME EARNED BY MEDICAL TEACHING, PLEASE SUBMIT A LETTER FROM THE INSTITUTION STATING THE NUMBER OF HOURS AND DATE(S) TO RECEIVE CREDIT.  CME CREDITS WILL NOT BE AWARDED FOR PREPARATION OF LECTURES.
JUDGING CLINICAL CASE PRESENTATIONS AND RESEARCH POSTER PRESENTATIONS (NON-OSTEOPATHIC)	SERVING AS A FORMAL JUDGE FOR CLINICAL CASE PRESENTATIONS AND RESEARCH POSTER PRESENTATIONS AT A FORMAL	GRANTED ON AN HOUR-FOR-HOUR BASIS  MAXIMUM OF TEN (10) CME CREDITS PER 3-YEAR AOA CME

	CME FUNCTION	CYCLE
<b>AOA CATEGORY 2-A CREDIT (CONTINUED)</b>		
<u>ACTIVITY TYPE</u>	<u>DESCRIPTION</u>	<u>RULES, CAPS, ETC.</u>
CLINICAL CASE PRESENTATIONS AND RESEARCH POSTER PRESENTATION (NON-OSTEOPATHIC)	PRIMARY AUTHOR IN PREPARING AND PRESENTING A CLINICAL CASE OR RESEARCH POSTER PRESENTATION	MUST BE PRIMARY AUTHOR  WILL RECEIVE 5 CME PER PRESENTATION

**III. ~~Category 2-A Credit~~**

-

~~A. Category 2-A includes formal educational programs that are sponsored by an ACCME accredited provider for *AMA-PRACategory 1 Credit*<sup>TM</sup>; approved by the American Academy of Family Physicians (AAFP); approved by an internationally known sponsor acceptable to the CCME, or an AOA-accredited Category 1 CME Sponsor that does not meet the faculty/hours requirement for Category 1-A credit.~~

<b>AOA CATEGORY 2-B CREDIT</b>		
<u>ACTIVITY TYPE</u>	<u>DESCRIPTION</u>	<u>SPECIAL RULES, CAPS, ETC.</u>
HOME STUDY	VIEWING NON-OSTEOPATHIC MEDICAL VIDEO, AUDIO, OR ONLINE CME COURSES	JOURNAL READING AND OTHER TYPES OF HOME STUDY CME INDEXED IN PUBMED HAVE A COMBINED MAXIMUM OF TWENTY (20) CME PER 3-YEAR AOA CME CYCLE.
JOURNAL READING (OTHER THAN THE <i>JAOA</i> AND OSTEOPATHIC JOURNALS)	READING OF ALL MEDICAL JOURNALS (OTHER THAN THE <i>JAOA</i> AND OSTEOPATHIC JOURNALS INDEXED IN PUBMED) IS AWARDED ONE-HALF (0.5) CME CREDIT FOR EACH JOURNAL READ.  INCLUDES JOURNAL-TYPE CME ON THE INTERNET	JOURNAL READING AND OTHER TYPES OF HOME STUDY CME INDEXED IN PUBMED HAVE A COMBINED MAXIMUM OF TWENTY (20) CME PER 3-YEAR AOA CME CYCLE.  TO RECEIVE CREDIT, PLEASE SUBMIT THE APPROPRIATE FORM.
TEXTBOOK READING	READING MEDICAL TEXTBOOKS	FIVE (5) CME CREDITS MAY BE GRANTED FOR EACH MEDICAL TEXTBOOK READ.  TO OBTAIN CME CREDIT, PLEASE SUBMIT THE APPROPRIATE FORM DOCUMENTING THE NAME OF THE MEDICAL TEXTBOOK(S) READ.

**AOA CATEGORY 2-B CREDIT (CONTINUED)**

ACTIVITY TYPE	DESCRIPTION	RULES, CAPS, ETC.
NON-INTERACTIVE CME ON THE INTERNET	JOURNAL-TYPE CME ON THE INTERNET THAT IS PRODUCED BY AN AOA-ACCREDITED SPONSOR, ACCME ACCREDITED PROVIDER FOR <i>AMA PRA CATEGORY 1</i> ™, OR APPROVED BY THE AAFP. THESE COURSES ARE ESSENTIALLY STATIC, TEXTBOOK TYPE PROGRAMS. THEY MAY HAVE HYPERTEXT JUMPS TO HELP THE READER PURSUE SPECIFIC INFORMATION.	AUDIO AND VIDEO PROGRAMS ON THE INTERNET THAT ARE SPONSORED BY AOA-ACCREDITED CATEGORY 1 CME SPONSORS WILL RECEIVE CATEGORY 1-B CREDIT.
AMERICAN BOARD OF MEDICAL SPECIALTIES (ABMS) MAINTENANCE OF CERTIFICATION AND SUBSPECIALTY/CAQ EXAMINATIONS	PARTICIPATION IN MAINTENANCE OF CERTIFICATION OR EXAMINATIONS FOR CERTIFICATE(S) OF ADDED QUALIFICATION SPONSORED BY THE AMERICAN BOARD OF MEDICAL SPECIALTIES (ABMS)	MAXIMUM OF FIFTEEN (15) CME CREDITS PER 3-YEAR AOA CME CYCLE
SCIENTIFIC EXHIBITS	THE PREPARATION AND PRESENTATION OF SCIENTIFIC EXHIBITS AT A COUNTY, REGIONAL, STATE, OR NATIONAL PROFESSIONAL MEETING	TEN (10) CREDITS PER SCIENTIFIC EXHIBIT

**Category 2-B Credits**

~~Category 2 B credit also shall be awarded for the following:—~~

- ~~A. The preparation and presentation of scientific exhibits at a county, regional, state, or national professional meeting.— These presentations and/or preparations are limited to ten (10) credits per scientific exhibit.—~~
- ~~B. Home study courses; viewing non-osteopathic medical video, audio or online CME courses.—~~
- ~~C. Journal type CME on the Internet.—~~
- ~~D. Faculty development; physician administrative training; quality assessment programs; observations at medical centers; and CME courses in medical economics.—~~
- ~~E. Participation in recertification examinations or examinations for certificate(s) of added qualification sponsored by the American Board of Medical Specialties (ABMS). Credit for this activity is limited to fifteen (15) credit hours per CME cycle.—~~
- ~~F. Five (5) credit hours may be granted for each medical textbook(s) read. To obtain CME credit documentation such as correspondence may be provided to the AOA Department of Client and Member Services providing the name of the medical text book(s) read.—~~
- ~~G. One half (0.5) hour of CME credit may be granted for each medical journal read.—~~



1 ~~IV. CME on the Internet~~

2 -  
3 Osteopathic physicians may earn up to fifteen (15) credits of their Category 1-A requirement from real-time interactive  
4 Internet CME, e.g., live programs per CME cycle. This is an increase from the previous 2013-2015 CME cycle which  
5 allowed nine (9) hours of the required thirty (30) Category 1-A credits to be obtained from interactive Internet CME  
6 programs.

7 —  
8 ~~A. Interactive CME~~

9 Category 1-A credit will be awarded for interactive, e.g., live online CME  
10 Conferences or case presentations, which includes both an online pre-test and  
11 post-test and allows the participant to ask questions of the presenter in either real-time or the presenter must respond to  
12 submitted questions within (48) hours of the presentation.

13 The CME event must meet AOA quality guidelines as defined in the *AOA Accreditation Requirements for AOA Category 1 CME*  
14 *Sponsors*, Page 9-11, including the faculty/hours, and sponsorship requirements.

15 -  
16 Category 2-A credit will be awarded to real-time, interactive, e.g., live, online CME conferences not meeting the faculty-hour  
17 requirements that are produced by CME providers accredited by ACCME for *AM4-PR4 Category 1 Credit™* or approved by  
18 the AAFP.

19 -  
20 To receive credit for interactive Internet CME, osteopathic physicians must participate and successfully complete a post-test  
21 provided by the CME Sponsor. A pass rate of 70% will qualify the physician for credit. Should the physician complete the  
22 post-test unsuccessfully, he or she may retake the test up to three times to achieve this score. Upon successful completion  
23 of the post-test, the AOA-accredited Category 1 CME Sponsor will report the appropriate CME credit to the AOA's  
24 Department of Client and Member Services for inclusion in the physician's CME Activity Report.

25 -  
26 ~~B. Non-Interactive CME~~

27 Category 1-B credit will be awarded to audio and video programs on the Internet sponsored by AOA-accredited Category 1-  
28 CME sponsors that meet the AOA quality guidelines as defined in the *AOA Accreditation Requirements for AOA Category 1*  
29 *CME Sponsors*, Pages 11, that meet the faculty/hours requirement. These courses are typically programs that are available on  
30 an on-demand schedule and are not a real-time, interactive simultaneous conference. To qualify for 1-B credit, attendees  
31 must complete a pre-test and post-test.

32 -  
33 To receive 1-B credit for interactive Non-Internet CME, osteopathic physicians must participate and successfully complete a  
34 post-test provided by the CME Sponsor. A pass rate of 70% will qualify the physician for credit. Should the physician  
35 complete the post-test unsuccessfully, he or she may retake the test up to three times to achieve this score. Upon successful  
36 completion of the post-test, the AOA-accredited Category 1 CME Sponsor will report the appropriate CME credit to the  
37 AOA's Department of Client and Member Services for inclusion in the physician's CME Activity Report.

38 -  
39 Category 2-B credit will also be awarded to journal-type CME on the Internet that is produced by an AOA-accredited  
40 sponsor, ACCME-accredited provider for *AM4-PR4 Category 1™*, or approved by the AAFP. These courses are essentially  
41 static, textbook-type programs. They may have hypertext jumps to help the reader pursue specific information.

42 -  
43 The AOA Council on CME reserves the right to evaluate each interactive CME Internet program and activity and to deny  
44 CME credit at its discretion.

45 -  
46 ~~V. CME Credit for Standardized Life Support Courses~~

47 The following standardized life support courses including provider, refresher and instructor levels will be awarded AOA  
48 Category 1-A CME credit up to a maximum of eight (8) credits per CME cycle. The remainder of the credits for the  
49 standardized courses will be awarded Category 1-B CME credit up to the limits as indicated in the table below. Online

1 standardized courses will be awarded CME credit for the practical part only.

2 -

<del>Course Name</del>	<del>Provider Course</del>	<del>Refresher Course</del>	<del>Instructor Course</del>
<del>Advanced Trauma Life Support</del>	<del>17</del>	<del>8</del>	<del>11</del>
<del>Advanced Cardiac Life Support</del>	<del>12</del>	<del>6</del>	<del>8</del>
<del>Basic Life Support (health care provider)</del>	<del>4</del>	<del>2</del>	<del>8</del>
<del>Pediatric Advanced Life Support (AHA)</del>	<del>14</del>	<del>8</del>	<del>9</del>
<del>Advanced Pediatric Life Support (AAP)</del>	<del>14</del>	<del>8</del>	<del>9</del>
<del>Neonatal Advanced Life Support</del>	<del>8</del>	<del>4</del>	<del>6</del>
<del>Advanced Life Support in Obstetrics</del>	<del>17</del>	<del>8</del>	<del>9</del>
<del>Adult Fundamentals of Critical Care Support (AFCCS)</del>	<del>13</del>	<del>8</del>	<del>13</del>
<del>Pediatric Fundamentals of Critical Care Life Support (PFCCS)</del>	<del>13</del>	<del>8</del>	<del>13</del>
<del>Advanced HAZMAT Life Support (AHLS)</del>	<del>24</del>	<del>24</del>	<del>31</del>
<del>Advanced Burn Life Support (ABLS)</del>	<del>7</del>	<del>7</del>	<del>4.5</del>
<del>Basic Disaster Life Support (BDLS)</del>	<del>7.5</del>	<del>7.5</del>	<del>7.5</del>
<del>Advanced Disaster Life Support (ADLS)</del>	<del>15.5</del>	<del>15.5</del>	<del>4</del>

3  
4  
5 **VI. Non-Qualified QUALIFYING Activities**

6 **A. Volunteer Work**

7 The AOA applauds volunteer work, but such work does not qualify for CME credit.

8 ~~**B. Post Graduate Studies**~~

9 ~~Studies undertaken in the quest for advanced degrees, whether Master of Science, Master of Public Health, Master of Business Administration, or Doctorate studies of any kind, do not qualify for CME credit.~~

11 ~~**B.**~~ **C. Medical Facility Tours**

12 Such tours do not qualify for CME credit.

13 **C. HEALTHCARE COMMITTEE AND DEPARTMENTAL MEETINGS**

14 SUCH MEETINGS DO NOT COUNT FOR CME CREDIT UNLESS THEY FALL UNDER THE ACTIVITIES LISTED IN "COMMITTEE AND HOSPITAL STAFF WORK."

16 **D. OSTEOPATHIC STATE LICENSING BOARD PARTICIPATION**

17 **E. INSPECTIONS**

18 **F. PHYSICIAN ADMINISTRATIVE TRAINING**



1 G. QUALITY ASSESSMENT PROGRAMS

2 WHILE PARTICIPATION IN QUALITY ASSESSMENT PROGRAMS DOES NOT QUALIFY FOR CME CREDIT,  
3 PARTICIPATION IN QUALITY IMPROVEMENT AND QUALITY ASSESSMENT PROGRAMS MAY COUNT  
4 FOR OCC COMPONENT 4 CREDIT THROUGH THE QUALITY IMPROVEMENT ACTIVITY ATTESTATION.

5 H. OBSERVATION AT MEDICAL CENTERS

6 I. MEDICAL ECONOMICS COURSES

7  
8 ~~VII. CME Requirements for Certified Physicians~~

9 -  
10 ~~A. AOA Board Certified Physicians~~

11 -  
12 1. ~~Physicians who are board certified are required to earn a minimum of fifty (50) CME credits within their specialty in each~~  
13 ~~three-year CME cycle. These credits may be earned in Category 1 or Category 2 according to the requirements established~~  
14 ~~by the AOA Bureau of Osteopathic Specialists (BOS). (Please see Certifying Board for clarification.)~~

15  
16 2. ~~Certifications of Added Qualification Subspecialty. For osteopathic physicians holding certification(s) of added~~  
17 ~~qualification (CAQs), a minimum of 25% of the credits (13 credits) must be earned at the level of the CAQ. At least 30% of~~  
18 ~~the specialty CME credits (15 credits) must be earned in the primary certification.~~

19 -  
20  
21 3. ~~CME sponsored by osteopathic specialty affiliates in the individual's declared specialty, will be applied to this requirement~~  
22 ~~on an unlimited hour by hour basis.~~

23 -  
24 -  
25 ~~B. ABMS Board Certified Physicians~~

26 -  
27 -  
28 1. ~~Physicians who are both AOA and ABMS board certified are required to earn the same specialty CME credit hours as~~  
29 ~~DOs who are AOA board certified only in order to meet AOA specialty requirements.~~

30  
31 2. ~~Physicians who are solely certified in an ABMS specialty are required to obtain a minimum of ten (10) Category 1-A~~  
32 ~~credits in AOA sponsored CME programs during each three year CME cycle in order to meet AOA specialty requirements.~~

33  
34 3. ~~Physicians who are solely certified through the ABMS must meet the 120 hour AOA membership requirement.~~

35  
36 ~~Please contact the certifying board for information regarding the use of preceptoring or other credits towards this~~  
37 ~~requirement. Osteopathic Physicians may refer to [www.osteopathic.org](http://www.osteopathic.org) for additional information regarding the "AOA~~  
38 ~~Specialty Continuing Education (CME) Policy" regarding specialty CME program requirements.~~

39 -  
40 ~~Note: Under current AOA policy, failure to meet the AOA specialty CME requirement is interpreted as a failure to meet the~~  
41 ~~individual physician's CME requirement. This could result in the loss of AOA membership and in turn result in the possible~~  
42 ~~loss of certification.~~

43 ~~VIII. Exemptions/Reductions~~

44 ~~A. General~~

45 ~~AOA members exempted from the CME program requirements include: (1) retired physicians no longer holding an active~~  
46 ~~license to practice medicine; (2) physician residing outside the geographic boundaries of the United States and Canada; (3)~~  
47 ~~students; interns; residents and academic fellows participating in AOA recognized or ACGME accredited postgraduate~~  
48 ~~programs; (4) physicians serving in the military and assigned to positions other than in his or her specialty or those~~  
49 ~~physicians on active duty who are involved in significant military operations; and (5) physicians who have received disabled~~

1 status.

2 -

3 ~~AOA Life Members in active practice are not exempted from the CME requirement.~~

4 ~~**B. Osteopathic Physicians in the Military: Reductions/Waivers**~~

5 ~~The Council on CME is aware of the difficulty osteopathic physicians in the military, Veterans Administration, and U.S. Public Health Service may have in acquiring osteopathic continuing medical education. The Uniformed Services encourages osteopathic physicians to fulfill his or her obligation to CME and the AOA believes it is essential that an osteopathic physician obtain a portion of this education in osteopathic sponsored programs. Therefore, AOA required physicians on active duty to obtain a minimum of five (5) CME credits per year, or fifteen (15) of the thirty (30) required Category 1 A hours per three year cycle, be received in osteopathic venues. This reduction is available only to those physicians on active duty who have accumulated a total of one hundred and twenty credits (120) hours of CME and who request said reduction from the Council on CME. The total CME requirement will be proportionally adjusted for time spent out of the United States.~~

13 -

15 ~~Osteopathic physicians serving in the uniformed services, who are engaged in active military operations, may be granted a waiver of his or her AOA CME requirement for membership if that physician is CME deficient at the end of the current CME cycle.~~

18 -

19 ~~Any osteopathic physician, other than career military personnel, who is called to active duty, emergency need duty, military operation, or placed on stand-by, and is CME deficient at the end of a CME cycle, may request to have his or her CME requirement waived or reduced.~~

22 -

23 ~~**C. Extenuating Circumstances**~~

24 ~~In the event that a physician is prevented from obtaining sufficient credit, e.g., serious illness, financial, or family problems, he/she is urged to report this to the AOA Council on Continuing Medical Education and the AOA, as they may qualify for a reduction in the requirements. Changes in a physician's practice status at the beginning of the CME cycle may reduce his or her AOA CME requirement. For additional information on extenuating circumstances, please contact the AOA Department of Client and Member Services at (888) 62 MYAOA (888 626 9262).~~

29 -

30 ~~AOA exemptions or reductions in the number of required credits, for membership or certification, do not affect individual state CME licensing requirements. The Council on CME will grant no reductions of CME credit hours without due cause unless policy advises otherwise.~~

33 -

34 ~~**IX. Failure to meet the AOA CME Requirement — End of CME Cycle**~~

35 ~~Beginning with the CME cycle which ended December 31, 2015, AOA members will have five (5) months following the close of a cycle to fulfill his/her CME requirements. If there are any questions about this policy, contact the AOA Department of Client and Member Services at [cre@osteopathic.org](mailto:cre@osteopathic.org).~~

38 ~~Note: Under current AOA policy, failure to meet the AOA specialty CME requirement is interpreted as a failure to meet the individual physician's CME requirement. This could result in the loss of AOA membership and in turn result in the possible loss of certification.~~

41

42 ~~**X.—Reporting CME Activities**~~

43 ~~REPORTING OF OSTEOPATHIC CME CREDIT IS THE RESPONSIBILITY OF THE ACCREDITED AOA CATEGORY 1 SPONSOR. CREDITS SUBMITTED BY A PHYSICIAN FOR SUCH ACTIVITIES WILL NOT BE ACCEPTED BY THE AOA. AOA CATEGORY 1 CME SPONSORS HAVE NINETY (90) DAYS AFTER THE PROGRAM TO SUBMIT CME CREDITS.~~

47

48 ~~REPORTING OF CME EARNED FROM AN ACCME-ACCREDITED PROVIDER FOR *AMA PRA CATEGORY 1 CREDIT*<sup>™</sup> OR AAFP CME PROGRAMS TO THE AOA IS THE RESPONSIBILITY OF THE PHYSICIAN. A~~

1 CERTIFICATE OF ATTENDANCE MUST BE PROVIDED TO THE AOA DEPARTMENT OF CLIENT AND  
2 MEMBER SERVICES AT [CRC@OSTEOPATHIC.ORG](mailto:CRC@OSTEOPATHIC.ORG) INDICATING THE TOTAL NUMBER OF HOURS  
3 ATTENDED. TRANSCRIPTS FROM OTHER INSTITUTIONS (HOSPITALS, CME TRACKERS, ETC.) WILL  
4 ALSO BE ACCEPTED IF IT CONTAINS THE TOTAL NUMBER OF HOURS.

5  
6 ALL SUBMISSIONS SHOULD INCLUDE THE PHYSICIAN'S NAME AND AOA ID NUMBER.

7 ~~To report ACCME accredited provider for *AMA PR4 Category 1 Credit*<sup>TM</sup> or AAFP CME programs, a certificate of~~  
8 ~~attendance must be provided to the AOA Department of Client and Member Services at [cre@osteopathic.org](mailto:cre@osteopathic.org) indicating the~~  
9 ~~total number of hours attended. Reporting of osteopathic CME credit is the responsibility of the approved AOA sponsor.~~

10  
11 **XI. Other Questions**

12  
13 If there are any questions concerning the CME program or ways in which to receive credit, or questions regarding a  
14 physician's status, please contact the AOA Department of Client and Member Services at (888) 62-MYAOA (888-626-  
15 9262) OR [CRC@OSTEOPATHIC.ORG](mailto:CRC@OSTEOPATHIC.ORG). In addition, a list of the "Frequently Asked Questions (FAQs)" is available online  
16 at [www.osteopathic.org](http://www.osteopathic.org).

17  
18 The following CME Reporting forms are available at [www.osteopathic.org](http://www.osteopathic.org).

- 19 1. Exemption/Reduction Form
- 20 2. Healthcare Facility Education Activities
- 21 3. HOME STUDY CME
- 22 4. Non-Osteopathic Programs – Category 1-B
- 23 ~~4.1 A AMA Specialty/Subspecialty~~

24  
25 "AOA Coming Events," a listing of upcoming CME (LIVE AND ONLINE) programs, are available in the Continuing  
26 Medical Education section at [www.osteopathic.org](http://www.osteopathic.org). AOA MEMBERS MAY ALSO VIEW THEIR CME ACTIVITY  
27 REPORT AT ANY TIME BY VISITING THIS SITE.

28  
29 ~~Members may view their CME Activity Report (CAR) at any time by visiting [www.osteopathic.org](http://www.osteopathic.org). Additionally, CME~~  
30 ~~online courses are available at this site.~~

31  
32 The ~~Council on Continuing Medical Education~~ BUREAU OF OSTEOPATHIC SPECIALISTS of the American  
33 Osteopathic Association (~~CCME~~)(BOS) maintains the right to update this guide as needed. The ~~Council~~ BOS reserves the  
34 right to evaluate all programs and activities on an individual basis to determine if and the amount of credit granted at its  
35 discretion. Osteopathic physicians are responsible for keeping abreast of the rules and regulations of CME.  
36

1 **APPENDIX A: PRORATION CHART**

2  
3 **INITIAL CERTIFICATIONS:**

4 WHEN A PHYSICIAN FIRST BECOMES CERTIFIED, THEIR CME REQUIREMENT WILL BE PRORATED  
5 FOR THE CURRENT AOA CME CYCLE ONLY. PRORATIONS WILL BE BASED ON THE DATE OF  
6 CERTIFICATION, AS FOLLOWS:

<b><u>ENTRY DATE</u></b>	<b><u>PRORATED REQUIREMENT</u></b> <i>* IN CASES WHERE THE PRORATED AMOUNT DOES NOT EQUAL A WHOLE NUMBER OR NUMBER ENDING IN .5, THE AMOUNT WILL BE ROUNDED DOWN TO THE NEAREST HALF POINT. **ALL PRORATIONS APPLY TO EACH CME REQUIREMENT (TOTAL, CATEGORY-SPECIFIC, ETC.)</i>
JANUARY 1, 2019 – JUNE 30, 2019	83%
JULY 1, 2019 – DECEMBER 31, 2019	67%
JANUARY 1, 2020 – JUNE 30, 2020	50%
JULY 1, 2020 – DECEMBER 31, 2020	33%
JANUARY 1, 2021 – JUNE 30, 2021	17%
JULY 1, 2021 – DECEMBER 31, 2021	NO REQUIREMENT UNTIL THE 2022-2024 CME CYCLE.

8  
9 **REACTIVATED CERTIFICATIONS:**

10 WHEN A PHYSICIAN REACTIVATES AN EXPIRED/INACTIVE CERTIFICATION, THEIR CME  
11 REQUIREMENT WILL BE PRORATED BASED ON THE AMOUNT OF TIME THE CERTIFICATION WAS  
12 INACTIVE, AS FOLLOWS:

<b><u>LENGTH OF INACTIVITY</u></b>	<b><u>PRORATED REQUIREMENT</u></b> <i>* IN CASES WHERE THE PRORATED AMOUNT DOES NOT EQUAL A WHOLE NUMBER OR NUMBER ENDING IN .5, THE AMOUNT WILL BE ROUNDED DOWN TO THE NEAREST HALF POINT. **ALL PRORATIONS APPLY TO EACH CME REQUIREMENT (TOTAL, CATEGORY-SPECIFIC, ETC.)</i>
1 DAY – 180 DAYS	83%
181 DAYS – 360 DAYS	67%
361 DAYS – 540 DAYS	50%
541 DAYS – 720 DAYS	33%
721 DAYS – 900 DAYS	17%
901 DAYS – 1096 DAYS	NO REQUIREMENT UNTIL THE 2022-2024 CME CYCLE.

**Appendix B: Exemptions, Reductions, and Waivers**

AOA exemptions or reductions in the number of required credits for certification do not affect individual state CME licensing requirements. The BOS will grant no reductions of CME credit hours without due cause unless policy advises otherwise.

Below is a list of common situations that may result in a reduction or waiver of the Lifelong Learning/CME requirement for OCC. For situations other than those listed below, please contact your AOA specialty certifying board.

<b><u>TYPE</u></b>	<b><u>REDUCTION/WAIVER</u></b>
RETIREMENT	<p>DIPLOMATES WHO PLACE THEIR CERTIFICATION INTO OFFICIAL “RETIRED” STATUS WILL NOT HAVE A LIFELONG LEARNING/CME REQUIREMENT.</p> <p>CERTIFICATES RETURNED TO “ACTIVE” STATUS FROM “RETIRED” STATUS WILL HAVE A PRO-RATED REQUIREMENT PER THE CHART IN APPENDIX A.</p>
MILITARY (NON-CAREER MILITARY PERSONNEL, INCLUDES PHYSICIANS CALLED TO ACTIVE DUTY, EMERGENCY NEED DUTY, MILITARY OPERATION, OR PLACED ON STAND-BY)	<p>REDUCTION OF 1/6 OF ALL REQUIREMENTS FOR EVERY 6 MONTHS OF QUALIFYING SERVICE.</p> <p>MILITARY ORDERS, INCLUDING ANTICIPATED LENGTH OF SERVICE (OR FINAL LENGTH OF SERVICE IF AT THE CONCLUSION OF SERVICE) ARE REQUIRED TO QUALIFY FOR THIS REDUCTION.</p>
MILITARY (ASSIGNED TO POSITIONS OTHER THAN HIS/HER SPECIALTY)	<p>REDUCTION OF 1/6 OF ALL REQUIREMENTS FOR EVERY 6 MONTHS OF QUALIFYING SERVICE.</p> <p>MILITARY ORDERS, INCLUDING ANTICIPATED LENGTH OF SERVICE (OR FINAL LENGTH OF SERVICE IF AT THE CONCLUSION OF SERVICE) ARE REQUIRED TO QUALIFY FOR THIS REDUCTION.</p>
MILITARY (CAREER MILITARY PERSONNEL, INCLUDING VETERANS ADMINISTRATION AND U.S. PUBLIC HEALTH SERVICE)	<p>THE BOS IS AWARE OF THE DIFFICULTY PHYSICIANS IN THE MILITARY HAVE IN ACQUIRING OSTEOPATHIC CME. IF A MILITARY PHYSICIAN IS DEFICIENT AT THE END OF THE CME CYCLE, A WAIVER OF THE REMAINING REQUIREMENT MAY BE GRANTED.</p>

<b>TYPE</b>	<b>REDUCTION/WAIVER</b>
WORKING OUTSIDE THE GEOGRAPHICAL BOUNDARIES OF THE UNITED STATES AND CANADA (INCLUDES MISSIONARY SERVICE)	<p>TO QUALIFY, A DIPLOMATE MUST BE OUT OF THE COUNTRY FOR A MINIMUM OF SIX CONTINUOUS MONTHS AND PROVIDE DOCUMENTATION FROM AN EMPLOYER OR VOLUNTEER/MISSIONARY WORK WITH DATES OF SERVICE.</p> <p>6-12 MONTHS' SERVICE = 1/3 REDUCTION IN EACH REQUIREMENT  1-3 YEARS' SERVICE = 50% REDUCTION IN EACH REQUIREMENT (MAXIMUM ALLOWED IS 50%)</p>
FULL MEDICAL DISABILITY (PERMANENT-NO INTENTION TO RETURN TO WORK)	<p>DIPLOMATE MUST PROVIDE LETTER FROM A TREATING PHYSICIAN.</p> <p>100% OF THE REQUIREMENT IS WAIVED.</p> <p>IF A DISABLED PHYSICIAN EVER RETURNS TO PRACTICE (EVEN IN AN ADMINISTRATIVE POSITION), THEY WILL HAVE A PRO-RATED REQUIREMENT PER THE CHART IN APPENDIX A.</p>
MEDICAL DISABILITY (TEMPORARY – E.G. UNABLE TO WORK CURRENTLY, BUT ANTICIPATING EVENTUAL RETURN TO WORK)	<p>DIPLOMATE MUST PROVIDE LETTER FROM A TREATING PHYSICIAN.</p> <p>UP TO 12 MONTHS' ILLNESS = 1/3 REDUCTION IN EACH REQUIREMENT  13-24 MONTHS' ILLNESS = 2/3 REDUCTION IN EACH REQUIREMENT  25-36 MONTHS' ILLNESS = 100% WAIVED</p>
MATERNITY/PATERNITY LEAVE	<p>DOCUMENTATION OF APPROVED FMLA FROM EMPLOYER REQUIRED.</p> <p>25% REDUCTION IN EACH REQUIREMENT FOR DIPLOMATES WHO HAVE TAKEN MATERNITY/PATERNITY LEAVE DURING THE CME CYCLE</p>
OTHER EXTENUATING CIRCUMSTANCES	<p>IN THE EVENT THAT A DIPLOMATE IS FACING FINANCIAL OR FAMILY PROBLEMS THAT PREVENT THEM FROM OBTAINING SUFFICIENT CREDIT, HE/SHE IS URGED TO CONTACT THE AOA DEPARTMENT OF CLIENT AND MEMBER SERVICES AT (888) 62-MYAOA (666-626-9262) OR <a href="mailto:CRC@OSTEOPATHIC.ORG">CRC@OSTEOPATHIC.ORG</a> , AS THEY MAY QUALIFY FOR A REDUCTION IN THE REQUIREMENTS.</p> <p>CHANGES IN A PHYSICIAN'S PRACTICE STATUS AT THE BEGINNING OF THE CME CYCLE MAY REDUCE HIS OR HER AOA CME REQUIREMENT.</p>

1  
2 **APPENDIX C: ALPHABETICAL LIST OF CME ACTIVITIES**  
3

<u>ACTIVITY TYPE</u>	<u>CATEGORY</u>	<u>RULES, CAPS, ETC.<sup>1</sup></u>
CLINICAL CASE PRESENTATIONS AND RESEARCH POSTER PRESENTATION	1-A (IF OSTEOPATHIC) 2-A (IF NON-OSTEOPATHIC)	MUST BE PRIMARY AUTHOR 5 CME PER PRESENTATION
CME ON THE INTERNET (INTERACTIVE)	1-A (IF FROM A 1-A SPONSOR) 2-A (IF FROM A NON 1-A SPONSOR)	
CME ON THE INTERNET (NON-INTERACTIVE)	1-B (IF FROM AN AOA CATEGORY 1 SPONSOR) 2-B (IF FROM AN <i>AMA PRA CATEGORY 1<sup>TM</sup></i> OR AAFP-ACCREDITED SPONSOR)	
COMMITTEE AND HOSPITAL STAFF WORK	1-B	MAXIMUM OF FIVE (5) CME CREDITS PER 3-YEAR AOA CME CYCLE
EXAMINATION (PRIMARY CERTIFICATION)	1-B	15 CREDITS FOR EACH EXAM PASSED
EXAMINATION (SUBSPECIALTY/CAQ CERTIFICATION)	1-B	15 CREDITS FOR EACH EXAM PASSED
EXAMINATION (OCC COMPONENT 3)	1-B	15 CREDITS FOR COMPLETING COMPONENT 3 PER 3-YEAR AOA CME CYCLE
EXAMINATION (MAINTENANCE OF CERTIFICATION AND SUBSPECIALTY/CAQ EXAMINATIONS WITH ABMS)	2-B	MAXIMUM OF FIFTEEN (15) CME CREDITS PER 3-YEAR AOA CME CYCLE
EXAMINATION ADMINISTRATION (ORAL/PRACTICAL EXAMINATIONS FOR AOA CERTIFYING BOARDS)	1-A	
EXAM CONSTRUCTION (CLINICAL CASE DEVELOPMENT)	1-B	PARTICIPATION IN EXAM DEVELOPMENT/CONSTRUCTION AND JOB TASK ANALYSES CAN EARN A MAXIMUM COMBINED 50% OF THE REQUIRED CME PER 3-YEAR AOA CME CYCLE
EXAM CONSTRUCTION (COMMITTEE WORK)	1-B	
EXAM CONSTRUCTION (ITEM WRITING)	1-B	

<sup>1</sup> PLEASE NOTE IF NO SPECIFIC CAP ON CREDITS IS NOTED IN THE "RULES, CAPS, ETC." SECTION, THERE IS NO LIMIT TO HOW MANY CREDITS A PHYSICIAN CAN EARN FROM THE ACTIVITY.

<u>ACTIVITY TYPE</u>	<u>CATEGORY</u>	<u>RULES, CAPS, ETC.<sup>2</sup></u>
FEDERAL ACTIVITIES	1-A (IF ACTIVE DUTY OR EMPLOYED BY A UNIFORMED SERVICE) 1-B (ALL OTHER FEDERAL CME ACTIVITIES)	
FELLOWSHIP TRAINING	1-B	TWENTY (20) CREDITS OF CATEGORY 1-B CME MAY BE AWARDED PER YEAR
FORMAL CME (OSTEOPATHIC)	1-A	
FORMAL CME (NON-OSTEOPATHIC)	1-B (IF NO EQUIVALENT COURSE CONTENT AVAILABLE WITHIN THE OSTEOPATHIC PROFESSION) 2-A 2-B	SEE “AOA CATEGORY 1-B CREDIT” FOR THE PROCESS TO REQUEST CONSIDERATION FOR CATEGORY 1-B CREDIT.
GME FACULTY/PRECEPTORS	1-B	A MAXIMUM OF 20% OF CME CREDITS PER 3-YEAR AOA CME CYCLE MAY BE EARNED FOR THIS ACTIVITY.
GRAND ROUNDS	1-A (IF FROM A 1-A SPONSOR) 1-B (IF FROM A NON OSTEOPATHIC (1-A) SPONSOR)	
HOME STUDY	2-B	JOURNAL READING AND OTHER TYPES OF HOME STUDY CME INDEXED IN PUBMED HAVE A COMBINED MAXIMUM OF TWENTY (20) CME PER 3-YEAR AOA CME CYCLE.
JOB TASK ANALYSES (JTAS)	1-B	PARTICIPATION IN EXAM DEVELOPMENT/CONSTRUCTION AND JOB TASK ANALYSES CAN EARN A MAXIMUM COMBINED 50% OF THE REQUIRED CME PER 3-YEAR AOA CME CYCLE

<sup>2</sup> PLEASE NOTE IF NO SPECIFIC CAP ON CREDITS IS NOTED IN THE “RULES, CAPS, ETC.” SECTION, THERE IS NO LIMIT TO HOW MANY CREDITS A PHYSICIAN CAN EARN FROM THE ACTIVITY.



<u>ACTIVITY TYPE</u>	<u>CATEGORY</u>	<u>RULES, CAPS, ETC.<sup>3</sup></u>
JOURNAL READING	1-B ( <i>JAOA</i> AND OSTEOPATHIC JOURNALS INDEXED IN PUBMED ONLY) 2-B (ALL OTHER MEDICAL JOURNALS INDEXED IN PUBMED)	TWO (2) CME CREDITS WILL BE AWARDED FOR EACH ISSUE OF THE <i>JAOA</i>  READING OF ALL OTHER OSTEOPATHIC JOURNALS INDEXED IN PUBMED QUALIFIES FOR AOA CATEGORY 1-B, AND READING OF ALL OTHER MEDICAL JOURNALS QUALIFIES FOR AOA CATEGORY 2-B CREDIT AND IS AWARDED ONE-HALF (0.5) CME CREDIT FOR EACH JOURNAL READ AND REPORTED ON THE FORM.  JOURNAL READING AND OTHER TYPES OF HOME STUDY CME INDEXED IN PUBMED HAVE A COMBINED MAXIMUM OF TWENTY (20) CME PER 3-YEAR AOA CME CYCLE.
JUDGING CLINICAL CASE PRESENTATIONS AND RESEARCH POSTER PRESENTATIONS	1-A (IF OSTEOPATHIC) 2-A (IF NON-OSTEOPATHIC)	MAXIMUM OF TEN (10) CME CREDITS PER 3-YEAR AOA CME CYCLE
MEDICAL TEACHING	1-A (IF OSTEOPATHIC) 2-A (IF NON-OSTEOPATHIC)	
POSTGRADUATE STUDIES	1-B	TWENTY FIVE (25) CREDITS OF CATEGORY 1-B CME MAY BE AWARDED
PUBLICATIONS	1-B	10 CME CREDITS PER ARTICLE PUBLISHED
RESIDENCY TRAINING	1-B	TWENTY (20) CREDITS OF CATEGORY 1-B CME MAY BE AWARDED PER YEAR
SCIENTIFIC EXHIBIT	2-B	TEN (10) CREDITS PER SCIENTIFIC EXHIBIT

<sup>3</sup> PLEASE NOTE IF NO SPECIFIC CAP ON CREDITS IS NOTED IN THE "RULES, CAPS, ETC." SECTION, THERE IS NO LIMIT TO HOW MANY CREDITS A PHYSICIAN CAN EARN FROM THE ACTIVITY.

<u>ACTIVITY TYPE</u>	<u>CATEGORY</u>	<u>RULES, CAPS, ETC.<sup>4</sup></u>
STANDARDIZED FEDERAL AVIATION COURSES	1-A	MUST BE SPONSORED BY THE FEDERAL AVIATION ADMINISTRATION, THE UNITED STATES ARMED SERVICES, OR THE CIVIL AERONAUTIC INSTITUTE
STANDARDIZED LIFE SUPPORT COURSES	1-A	ONLINE STANDARDIZED COURSES WILL BE AWARDED CME CREDIT FOR THE PRACTICAL PARTY ONLY.
TEXTBOOK READING		FIVE (5) CME CREDITS MAY BE GRANTED FOR EACH MEDICAL TEXTBOOK READ

**APPENDIX D: CRITERIA FOR CATEGORY 1-A AND 2-A PRESENTERS**

IN ORDER TO BE DEEMED ACCEPTABLE AS CATEGORY 1-A OR 2-A CME, ALL EDUCATIONAL CONTENT MUST BE PRESENTED BY AN AOA OR ABMS BOARD CERTIFIED PHYSICIAN. THE BOS RECOGNIZES THAT SOME TOPICS MAY BE APPROPRIATELY PRESENTED BY OTHER QUALIFIED PROFESSIONALS (E.G. LICENSED PSYCHOLOGIST, PHYSICAL THERAPIST, ETC.). THEREFORE, CME LECTURES MAY ALSO QUALIFY FOR CATEGORY 1-A OR 2-A CREDIT IF PRESENTED BY AN INDIVIDUAL WHO MEETS ONE OR MORE OF THE CRITERIA LISTED BELOW:

- 1) FOREIGN-TRAINED PHYSICIANS – FOREIGN-TRAINED PHYSICIANS MUST HAVE REACHED THE APPROPRIATE TERMINAL DEGREE IN THE FIELD FOR WHICH THEY ARE PRESENTING IN ORDER TO RECEIVE CATEGORY 1-A OR 2-A CME CREDIT.
- 2) NON-PHYSICIAN PRESENTERS – NON-PHYSICIAN PRESENTERS SHOULD HAVE REACHED THE APPROPRIATE TERMINAL DEGREE IN THE FIELD FOR WHICH THEY ARE PRESENTING IN ORDER TO RECEIVE CATEGORY 1-A OR 2-A CME CREDIT.
- 3) PHYSICIANS CURRENTLY PARTICIPATING IN AN AOA OR ACGME-ACCREDITED CLINICAL OR RESEARCH FELLOWSHIP PROGRAM
- 4) INDIVIDUALS WHO ARE CURRENT FULL-TIME FACULTY MEMBERS OF A COCA OR LCME-ACCREDITED MEDICAL SCHOOL

QUESTIONS ABOUT QUALIFYING CRITERIA CAN BE DIRECTED TO THE VICE PRESIDENT OF CERTIFYING BOARD SERVICES.

---

<sup>4</sup> PLEASE NOTE IF NO SPECIFIC CAP ON CREDITS IS NOTED IN THE "RULES, CAPS, ETC." SECTION, THERE IS NO LIMIT TO HOW MANY CREDITS A PHYSICIAN CAN EARN FROM THE ACTIVITY.